

ANNUAL REPORT

2014-15



Sasakawa-India Leprosy Foundation
Working Magic





“ If the battle to eliminate leprosy is to be won, first and foremost widespread discrimination against leprosy-affected people and their families must stop. This is a violation of their basic human rights. ”

Yohei Sasakawa
WHO Goodwill Ambassador for Leprosy Elimination,
Founder, Sasakawa-India Leprosy Foundation,
Chairman, The Nippon Foundation (TNF)

CONTENTS

WHY S-ILF EXISTS?	01
ABOUT S-ILF	03
MESSAGE FROM THE FOUNDER	06
MESSAGE FROM THE CHAIRMAN	07
MESSAGE FROM THE EXECUTIVE DIRECTOR	08
S-ILF'S GOVERNANCE AND TEAM	11
OUR PROGRAMS 2014-15 AT A GLANCE	13
LIVELIHOOD GENERATION AND CAPACITY BUILDING	13
SKILLS TO EMPLOYMENT PROGRAM (STEP UP)	25
COMMUNICATION AND ADVOCACY	41
S-ILF IN THE NEWS	46
OUR PARTNERSHIPS	47
FINANCIAL HIGHLIGHTS	48
YOUR ROLE	50





WHY S-ILF EXISTS?

MOO-VERS AND SHAKERS!

On the outskirts of the small town of Jurda in Raigarh, Chhattisgarh nestles Arunoday Parisar Kusht Ashram, a small, fairly isolated leprosy colony. A few years back, the colony was a mere cluster of huts inhabited by leprosy-affected families who relied on begging and menial labor for survival. Men and women from here walked several kilometers or commuted daily by erratic public transport to Jurda and nearby towns for their daily earnings.

Today, there is a palpable change. And the change began when seven middle-aged women took up the challenge of shifting from begging to start a small dairy enterprise of their own. Motivated and encouraged by S-ILF, they overcame their fears and trepidations and dared to dream of financial independence and freedom from the demeaning dependence on charity as a means of survival. At first the idea of financial independence was an alien one. A life time of social stigma and deprivation had eroded their confidence in themselves and they were not at all sure that they could make a success of any economic venture. After much deliberations they identified cow rearing and dairy farming as a feasible and doable activity. Once they had made up their minds, there was no looking back for these women.

With financial and technical support from S-ILF these women bought seven jersey cows. Given the lack of support from the colony leaders, the women initially depended heavily on a middle man to sell the milk and were short changed by him. This middleman would give them less than INR 17 for a liter of milk when the market



rate was INR 32. They continued to give in to the deal as they lacked confidence to reach out to buyers on their own. To make the situation more crippling four of their cows died of illness. This was a heartbreaking setback for the group. As the events unfolded, they realized they had in fact been misled by the insurance company into believing their cows had been insured. Dejected they decided to give up the enterprise at this point.

Timely intervention by the State Leader, Vijay Masih, family members and S-ILF helped them to

resurface with renewed determination. Following a series of counseling sessions, training workshops and leadership and development meetings facilitated by S-ILF, these women resumed work to rebuild their enterprise. The real turnaround came when the hotel manager where S-ILF conducted their training meetings gave them the order to supply milk to his hotel. Assured demand gave the enterprise the much needed stability and restored the confidence among the women.

Today Bhoori Bai, Dhan Bai, Heera Bai, Sheila, Sulochna and Tiharin are happy beneficiaries of the enterprise (Deshawati had to exit from the business due to health reasons). With 22 cows and buffaloes this cow rearing women's enterprise is a thriving and profitable one.

The secret of their success is a disciplined, team-led approach to work. Today, their cows are insured, their cow shed is always clean and well maintained and they have a number of committed buyers of milk, whose confidence they have won over the past few years. They hold regular team meetings and maintain organized records of their activities. The husbands of these women are now also involved in the business. All the women have been able to upgrade their mud homes to pucca houses and bought their own sheep, goat and poultry to supplement their incomes.

Today, this empowered women's group is a source of inspiration to the local community and are instrumental in its growth!



ABOUT S-ILF

**WE WORK
TO EMPOWER THE
LIVES OF THE
LEPROSY-AFFECTED.**

Leprosy-affected people and their families are among the most stigmatized worldwide. In India too, there are large numbers who are forced to live in segregated colonies which are often acutely deprived of even the most basic amenities. Given the stigma associated with the disease, people once affected by leprosy and their families also do not have access to opportunities to earn a decent living in a dignified way and have to depend on alms and donations for survival. For the past seven years, S-ILF has been working with the leprosy-affected population living in colonies to bring about a deep and long lasting improvement in their lives. The core of its work is a set of programs that are strategically designed to respond to the needs and aspirations of the people within colonies and collaboratively implemented with them to achieve a sustainable transformation.

We work closely with them to help them realize their dreams of a dignified and independent life by providing them and their family member's opportunities for livelihood generation, skill development and education,



thereby empowering them to move away from begging for their sustenance.

Economic empowerment alone cannot lead to mainstreaming for which social acceptance is a must. S-ILF works towards raising awareness among different sections of society against the social and economic discrimination of leprosy-affected people. Founded in 2006, S-ILF is the brain child of Mr. Yohei Sasakawa, the WHO Goodwill Ambassador for the elimination of leprosy and Chairman of The Nippon Foundation. Mr. Sasakawa has worked relentlessly for the cause throughout his life.

The core of S-ILF's approach is its long term commitment to the leprosy-affected population and a set of programs that are strategically designed and collaboratively implemented with and within colonies to achieve deep and long-lasting improvement in the lives of leprosy-affected. Given the stigma associated with this disease, people once affected by leprosy and their families are generally deprived of opportunities to earn a decent living in a dignified way and have to depend on alms and donations for their survival.



We work closely with them and help them to realize their dreams of a dignified and independent life. We do this by providing them and their family members opportunities for livelihood generation, skill development and education, thereby empowering them to move away from the demeaning and undignified life of begging.

S-ILF also works towards raising awareness among different groups of people against social and economic discrimination of leprosy-affected people.

OUR MISSION

To end the stigma against the disease and to ensure equal social, economic and cultural opportunities for those affected by leprosy.

OUR VISION

Integration of leprosy-cured people and their families into society by ending the discrimination faced by them.

OUR GOALS

- To increase social acceptability of leprosy-cured people and their families through dissemination of scientific information.
- To create conditions that will enable them to have equal access to economic opportunities.

OUR STRATEGY

Recognizing that this reintegration requires changing mindsets and attitudes as much as enhancing the capabilities of those affected to

access market opportunities, S-ILF has adopted a five pronged approach:

- To enhance employability of leprosy-affected people through livelihood generation, education and skill training for both formal and informal sectors
- To match capacity building with market demand
- To provide access to financial resources for self-employment
- To encourage social responsibility among different sectors of society to give equal opportunities in gainful employment to those affected by leprosy
- To build partnerships amongst NGOs, self-help groups, corporate, and media to achieve our goals

S-ILF'S PILLARS OF WORK

- Capacity building and training in livelihood activities
- Facilitating access to vocational training and higher education
- Providing micro finance opportunities
- Acting as a catalyst in forming self-help groups
- Raising awareness about leprosy among all sections of the society to fight the stigma
- Working in association with other NGOs, charitable organizations, individuals and mentors etc., to achieve its objectives



MESSAGE FROM THE FOUNDER



It gives me great pleasure to reach out to you as Sasakawa-India Leprosy Foundation presents its Annual Report 2014-15.

As is well known, India accounts for more than half the global burden of leprosy and has a long history of leprosy-related discrimination. It was to ensure equal social, economic and cultural opportunities for those affected by the disease, and to end the deep-rooted stigma against leprosy, that S-ILF was established in 2006, although these are no easy tasks.

S-ILF has displayed indomitable passion, perseverance and integrity in working toward this vision with significant successes to date. Through skills-training programs and the provision of small grants, it provides people affected by leprosy with the opportunity to get ahead through their own efforts and live in dignity.

Recently, an external evaluation was carried out by the International Development Center of Japan that clearly identified S-ILF's achievements and challenges. Its long-running self-support projects and other activities were given high marks in recognition of the steady efforts both of S-ILF staff and people affected by leprosy themselves. For this I would like to offer all a heartfelt tribute.

This evaluation reviewed S-ILF's activities to date and offered guidance on how it should proceed going forward.

While it is very gratifying that the efforts of many people involved have been recognized in this way, at the same time there remain many aspects of the fight against leprosy that need to be addressed and I would like to work together with S-ILF to make the necessary improvements.

I look forward to S-ILF redoubling its efforts to raise social awareness of the discrimination that people affected by leprosy face and to work towards a resolution of this issue.

S-ILF is encouraged to pay increasing attention to this aspect of the fight against leprosy even as it continues to strive for the empowerment of people affected by the disease. If governments, national and international agencies and NGOs all join hands, I believe we will triumph over leprosy and bring down the remaining walls of prejudice.

I wish S-ILF all the very best in this endeavor!

A handwritten signature in Japanese calligraphy, reading '佐川 陽平' (Sasakawa Yohei).

Yohei Sasakawa,
Chairman, The Nippon Foundation, Japan

MESSAGE FROM THE CHAIRMAN



I am pleased to present the annual report of S-ILF for the year 2014-2015. The report highlights the significant achievements made by the foundation in the last year. Initiatives, both in creating livelihood and in training, have begun to help people affected by leprosy and their families build a better life for themselves.

This year S-ILF has strengthened its programs further. The foundation has made steady progress and has expanded its reach to 18 states across India. There are now a total of 191 livelihood projects currently running all across India. It has increased efforts to take the project beneficiaries for exposure visits where they can see first-hand the functioning of different microenterprises and learn how to make their initiatives successful. There is noticeable progress not only in terms of financial success of the enterprises but also in terms of confidence of the beneficiaries in further expanding the projects and making a definitive move away from begging. This was clearly visible in terms of the proposals received as well as the three projects that won S-ILF's 5th Rising to Dignity Awards, 2015.

The Education Program has also progressed well in the last year. The National Skill Development Corporation (NSDC) supported training program has been extremely successful. 267 youth from the colonies of 8 states have been trained. Nursing scholarships have also gained popularity among the colonies and S-ILF has received an even more positive response as compared to last two years.

S-ILF continued to strive towards achieving the goal of eradicating stigma associated with leprosy. It organized its 5th Rising to Dignity Awards. The Union Railway Minister, Mr. Suresh Prabhu was the Chief Guest and gave away the awards. S-ILF also organized visits of Parliamentarians to the leprosy colonies in Odisha and West Bengal to interact with the people affected by leprosy and understand their needs and concerns. It collaborated with National Human Rights Commission (NHRC) to spread awareness among school children. In all, 20 schools involving around 2000 students participated in this program to date.

The year was also marked by a very special milestone: the announcement of the HH Holiness the Dalai Lama Trust-Sasakawa Scholarship Program for students wishing to pursue higher education.

S-ILF will continue in its efforts to assist people affected with leprosy and their families to regain their place in society by building their capacities to live independent dignified lives. Changing mindsets in the larger community is a big task and in the coming years S-ILF will be stepping up its activities in this direction.

A handwritten signature in blue ink, appearing to read 'S.K. Noordeen'.

Dr. S.K. Noordeen
Chairman, S-ILF

MESSAGE FROM THE EXECUTIVE DIRECTOR



The year 2014-15 has been a year of stock taking. The Nippon Foundation contracted the International Development Center of Japan, a well reputed international agency to conduct an external evaluation of S-ILF's livelihood and management activities and processes.

I am pleased to report that S-ILF'S Livelihood program got a high rating on Relevance, Impact and Effectiveness. In the area of management, our work was rated moderate in terms of Sustainability and Efficiency even as the agency commended S-ILF on operating efficiently with a small staff as compared to other similar organizations. Sustainability referred to S-ILF's financial stability and the agency appreciated that the investment policy provided a stable income and that high employment retention gave it operational stability.

Program work continued at a steady pace. We continued to extend our livelihood projects by 21 this year. I am pleased to share that today S-ILF is engaged in a total of 191 projects reaching out to beneficiaries in 18 states across the country positively impacting more than 1,800 leprosy-affected families.

We have consciously made a strong effort to focus on capacity building under this program before providing financial assistance so as to ensure greater sustainability of the projects. These efforts are showing visible impact in terms of greater commitment, acceptance of the mentors and greater compliance to business plans. As a result the overall pace of implementation has shown an improvement and there have been fewer delays.

We also figured out that several youth would like to start their own microenterprises and were reluctant to join hand with the elders. This led us to explore the possibility of training such youth for microenterprise development and we hope to start this training in the coming year.

Under our STEP UP program, the National Skill Development Corporation (NSCD)-supported projects gathered pace this year. We are close to meeting our target of training 350 youth soon, completing the training of 267 youth across 9 states as of this year.

In November 2014, S-ILF facilitated the milestone announcement of the HH Dalai Lama-Sasakawa Scholarship (HHDLs) educational program funded jointly by the HH the Dalai Lama Trust and Mr. Sasakawa. The program will focus on providing financial assistance to those students wanting to take up professional degree courses of 1-4 year duration in the states of Delhi, Bihar, Uttar Pradesh and Odisha.

The external evaluation had recommended reaching out to the second and third generation members of leprosy-affected people and to increase the outreach of our scholarship program. Happily we had stepped up activities in this area even before their recommendations came in.

S-ILF has always welcomed collaborative working with various partners. We continue to explore ways to work with different groups to meet our goals. Our awareness workshops in the tribal areas of Jharkhand is testimony to this philosophy. In March 2015, S-ILF embarked on a project partnering with Netherlands Relief Foundation (NLRF), an International Federation of Anti Leprosy Organizations (ILEP).

National elections and formation of the new parliament were the key highlights of the Indian political landscape in 2014. As a result the activities of the Forum of Parliamentarians to Free India of Leprosy were impacted. S-ILF reached out to new Parliamentarians around the first (read winter) session of the Parliament in 2015. The process of engaging new MPs is an ongoing one, however, the initial core members continue to offer their support for the cause.

We also made a first effort to participate in and facilitate the inclusion of leprosy in the disability sector and in January 2015, S-ILF participated in the National Conference on Leprosy and Disability organized by Disabled People's International in collaboration with The Nippon Foundation and National Centre for Promotion of Employment for Disabled People (NCPEDP).

To date S-ILF's efforts have focused on livelihood generation and skill development at the grassroots level, and relatively less focus has been on awareness building. The independent evaluation report of S-ILF's programs reinforced the need for a concerted communications effort to create awareness about leprosy as well as to make public aware of the work that we do along with strengthening linkages with other NGOs.

Bearing this in mind, in the coming years S-ILF plans to increase focus on its communications and advocacy functions.



Dr. Vineeta Shanker
Executive Director, S-ILF



S-ILF'S GOVERNANCE AND TEAM



OUR BOARD

CHAIRMAN

Dr. S.K. Noordeen
Chairman, Leprosy Elimination Alliance (LEA)
and Former Director (Leprosy) WHO, Geneva

MEMBERS

- Mr. Tarun Das, Former Chief Mentor, Confederation of Indian Industry (CII)
- Ms. Syeda Imam, Former Member, National Commission for Minorities
- Mr. Tatsuya Tanami, Executive Director, The Nippon Foundation, Japan
- Mr. K. Yamaguchi, Director, Sasakawa Memorial Health Foundation, Japan
- Mr. R. Vinay Jha, Retired IAS, Former Director, General Fashion Design Council of India
- Dr. Vineeta Shanker, Executive Director, S-ILF

ADVISORY MEMBERS

- Dr. Derek Lobo
- Dr. Ranjit Roy Choudhary
- Mr. Rajesh Srivastava

OUR COMMITTEES

LIVELIHOOD PROJECT SELECTION

- Dr. S.K. Noordeen, Board Chairman
- Dr. P.K. Gopal, Board Member
- Dr. Vineeta Shanker, Board Member

OUR TEAM

EXECUTIVE DIRECTOR



Dr. Vineeta Shanker

LIVELIHOOD PROGRAM



Mr. Sanjeev Kumar
Program Manager



Ms. Rituparna Sarangi
Program Officer



Ms. Yogita D Parkale
Program Associate



Mr. Atul Kumar
Program Officer



Mr. Khalid Sarfuddin
Program Officer



Mr. Nutan Kumar Sogoria
Program Associate

EDUCATION WORK PROGRAM



Ms. Payal Gadhiok
Consultant



Mr. Tanzeel Ur Rahman
Program Officer

COMMUNICATION AND ADVOCACY



Mr. Aftab Pasha
Program Officer



Ms. Rachna Mantri
Consultant

ADMINISTRATION AND FINANCE



Mr. Ram Autar
Admin and Accounts Officer



Ms. Rajni Sharma
Consultant



Mr. Ganesh Prasad Dhuria
Office Attendant

Mr. Raj Kumar Masih
Driver

OUR PROGRAMS

2014-15 AT A GLANCE

LIVELIHOOD GENERATION AND CAPACITY BUILDING

S-ILF is working to change the lives of the leprosy-affected by empowering them to build sustainable livelihood.

Our Livelihood program is designed to enable people to free themselves from the generational cycle of poverty and stigma. We work with beneficiaries to develop locally relevant and sustainable sources of livelihoods and provide them financial assistance to develop these enterprises. Our activities have evolved over the years and vary depending on the local context in terms of natural resources, skills with the community, aspirations of the people and the opportunities in the local markets. S-ILF supports persons affected by leprosy in building their skills, capacities and assets for leading a life of dignity and security. We also promote women's entrepreneurship to ensure that women from the colonies are empowered, live in dignity, and their households have secure and resilient lives and livelihoods.

Given the stigma associated with the disease, people and their families once affected by leprosy are generally deprived of opportunities to earn a decent living in a dignified way often depending on begging and donations for their survival. For them employment or self-employment are not easily forthcoming because of both stigma and lack of skills. Social mindsets need to undergo a major change before we can see people once affected by leprosy being able to work for wages. Till then self employment is the way forward.

S-ILF believes that it is important to create opportunities for self-employment, which are



on one hand market feasible, sustainable, and profitable, and on the other match the skills and aptitudes of the persons undertaking them. To ensure this, financial support offered by S-ILF goes hand-in-hand with capacity development for sustainable livelihood generation.

Capacity development through trainings, workshops and exposure visits is essential to ensure the long term sustainability of the microenterprises. Our aim is to strengthen the technical skills and morale of the grantees so that they can within a short period of time

sustain their enterprises on their own. This is achieved through microenterprise development training, business orientation workshops, enterprise formulation, book keeping, customized training and fostering on marketing linkages, providing constant guidance through mentorship and finally by monitoring closely to ensure progressive and productive livelihood. Financial assistance is provided directly into their bank accounts cutting off thereby all intermediaries and facilitating banking practices. Funding is staggered and disbursement is based on achievement of milestones. As a result, together with active participation of mentors and the beneficiaries, S-ILF is deeply involved in inculcating a dignified sense of ownership and accountability among the beneficiaries, towards their livelihood projects.

Taking into account the previously approved grants, S-ILF has till today worked on a total of 191 approved projects reaching out to 170 leprosy colonies in 18 states across the country positively impacting more than 1,800 leprosy-affected families.



Ms. Yogita Parkale,
Program Associate,
Livelihood Program

“

Due to the stigma associated with the disease, the people affected by leprosy cannot readily access opportunities to improve their economic and social well being. Low acceptance in society makes it difficult for them to find formal or informal wage based employment. The need to depend on begging, alms and donations for meeting their basic needs not only erodes their dignity and self-confidence, it makes transition into self-employment a risky and difficult proposition.

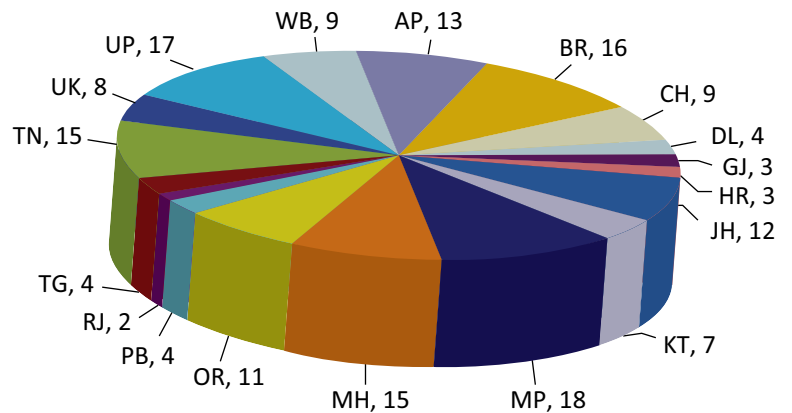
S-ILF thus focuses on economic empowerment by not only providing financial assistance for sustainable livelihood generation but also invests in leadership and capacity building, technical project related trainings as well as providing mentorship support to the leprosy-affected people in their efforts at self-employment.

”



In FY 2014-2015, S-ILF approved funding of 21 new livelihood projects to 185 leprosy-affected persons. The projects are located in Telangana; Odisha; in Chhattisgarh; Karnataka; Maharashtra; Madhya Pradesh; Uttar Pradesh and West Bengal.

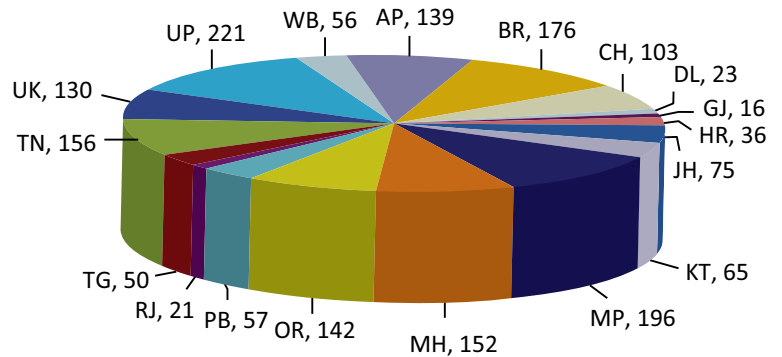
S-ILF's Outreach -170 Colonies from 18 States



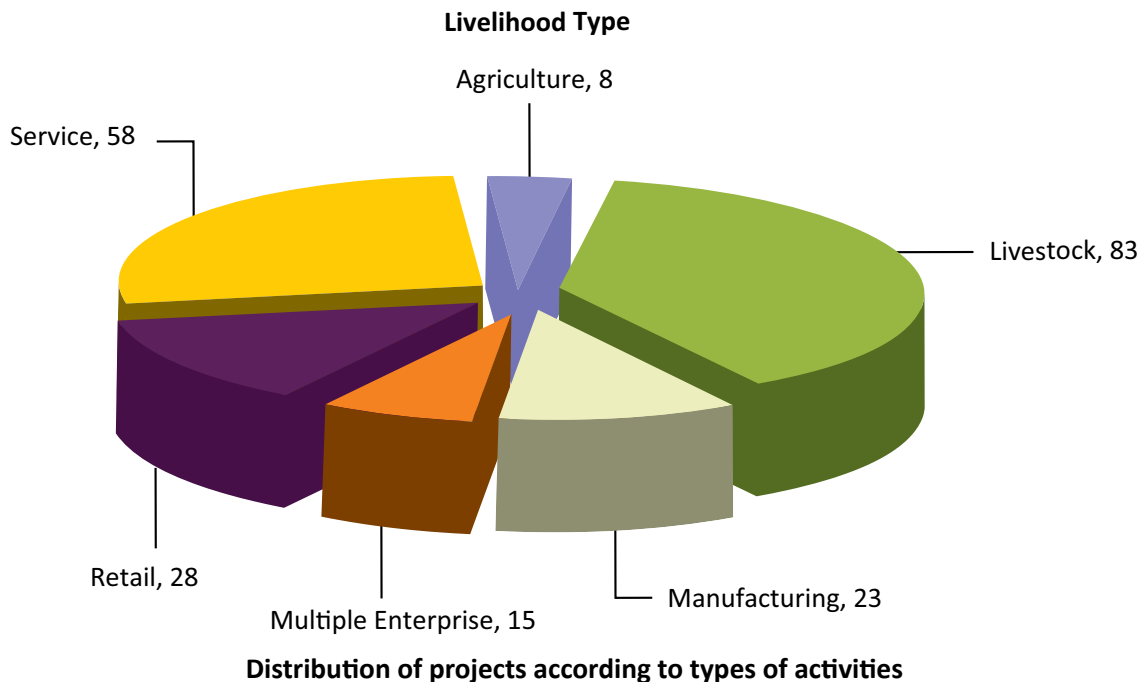
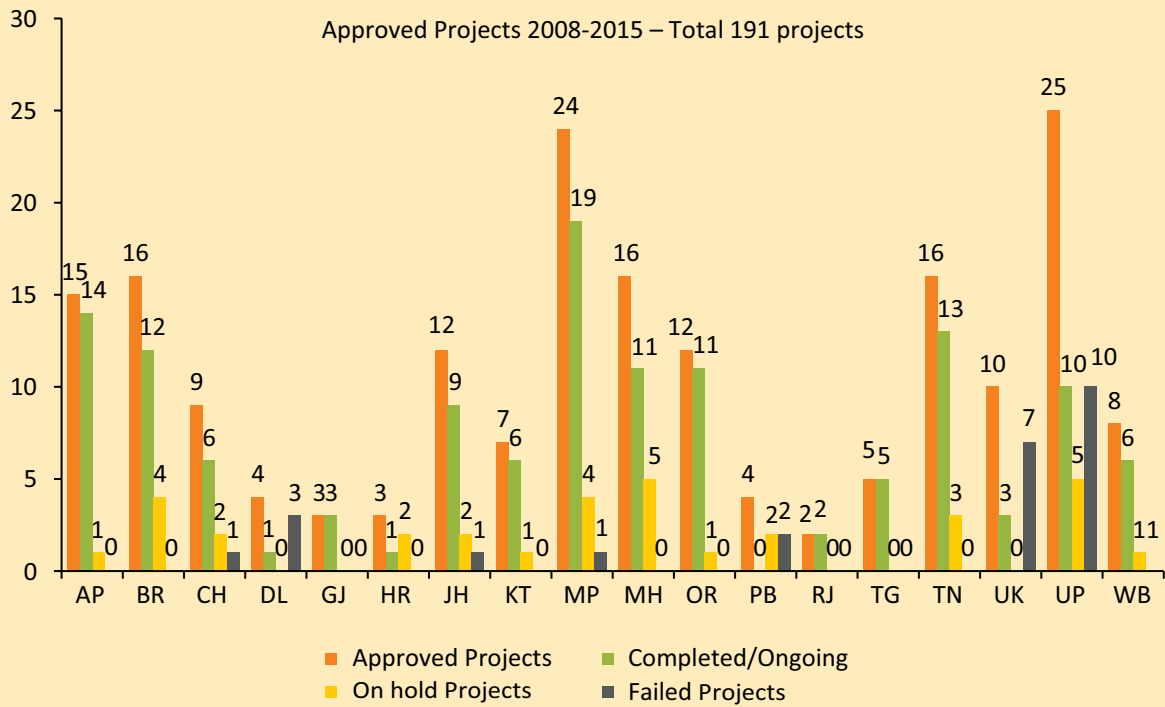
State-wise distribution of colonies where S-ILF livelihood projects 2015 have been undertaken



Total Direct Beneficiaries - 1814



State-wise distribution of beneficiaries of S-ILF's livelihood assistance



This year too, the people from the colonies came forward with their market-based ideas to develop different livelihood projects like poultry, rickshaw pulling, petty trading, chilli pounding and flour mill, mineral water selling, mandap decorator and mini tent house (on rent), wedding music band (on rent), tyre moulding, A/C and refrigerator repair, saree selling, construction centering activity, electrical service center, general store, paper plate selling, women’s cosmetics and snacks corner, cement block making, vegetable and flower cultivation and brick making.

SUPPORTING OUR BENEFICIARIES THROUGH TRAININGS

For the success of the project it is important that the beneficiaries develop and take full ownership of the projects proposed by them. To equip them to develop proposals and handle the projects on their own, S-ILF conducts trainings at different stages of the project and continues to mentor them as and when needed.

TRAINING FOR SOCIO ECONOMIC CHANGE (TSEC)

Training for Socio-Economic Change (TSEC) is the first training the colony community attends in the process of developing their livelihood projects. Its aim is to orient the people on the need for socio-economic change. The primary focus is microenterprise development training and developing viable livelihood proposals.

In FY 2014-15, S-ILF conducted its 13th TSEC in September 2014 and trained 31 people from 9 colonies in 4 states i.e. Chhattisgarh, Madhya Pradesh, Odisha and Uttar Pradesh.

In the TSECs, the participants learnt different aspects of developing a business proposal like market research, identification of viable livelihood options, marketing, costing, pricing, and sales projection through class room sessions. The participants enthusiastically participated in the sessions.

On completion of this training, the participants submitted their proposals for which they conducted market feasibility with the help of S-ILF's local NGO partners. This ensures that the projects are selected by the proposal owners themselves and that they have the rudimentary understanding of the requirements of the projects they want to undertake.

STAKEHOLDERS ORIENTATION WORKSHOPS (SOWS)

The beneficiaries of the projects that are approved for funding are then provided a training on S-ILF's funding mechanisms, financial management, roles and responsibilities, marketing etc., for the sustainability of the enterprise. They are also initiated in S-ILF's livelihood programs, entrepreneurship, good practices, livestock management, finalizing action plans and business plans.

In the FY year 2014-15, S-ILF organized two 3-day SOWs. S-ILF's 13th and 14th SOWs were conducted for 74 beneficiaries across 9 states in the month of January 2015 for 22 approved projects from 13th Project Selection Committee Meeting (PSCM). These SOWs were organized in New Delhi for the projects from Odisha, Madhya Pradesh, Andhra Pradesh, Telangana, Chhattisgarh, Maharashtra, Karnataka, Uttar Pradesh and West Bengal.





Discussions and interactive sessions during the workshop enabled the beneficiaries to learn how to develop their microenterprise. One major outcome of such trainings was that they overcame the fear of speaking in the public, which proved to be an effective way of building confidence. The beneficiaries also shared their learnings during the training and registered their involvement in all the activities.

The beneficiaries showed keen interest especially in assignments which required greater level of involvement, focused discussion and group activity such as – SWOT analysis, prioritizing, planning and budget development and business plan development.

TRAINING AND EXPOSURE (TAE) MEETINGS

Training and Exposure meetings provide specific training to the beneficiaries following project approval. Seven TAEs of the 12th PSCM projects in Bihar, Jharkhand and West Bengal were undertaken.

OTHER ACTIVITIES

STATE-LEVEL MEETINGS

The State level meetings are organized with the objective of providing a platform for the beneficiaries of the enterprises to share their experiences, present success and conduct discussions to find viable solutions to the challenges faced by them in running their livelihood enterprises.

In FY 2014-2015, S-ILF successfully conducted state level meetings in Madhya Pradesh, Jharkhand, Odisha and Karnataka in Nov 2014, Jan 2015 and March 2015.

*MICROENTERPRISE LEADERSHIP
DEVELOPMENT (MELD)*

MELD meetings are aimed at bringing out and developing leadership qualities in the beneficiaries who need added support to scale up their enterprise. The first MELD in 2014-2015 was conducted in Ratlam, Madhya Pradesh for four colonies in April 2014. The second one was conducted in Bihar in Dec 2014. The third one was conducted in Andhra Pradesh in November 2014, the 4th MELD was in West Bengal in January 2015 and the 5th MELD was conducted in Tamil Nadu in February 2015.



In addition, community level meetings were organized by S-ILF and mentor organizations in the central and north east region of Jharkhand in June 2014. The meeting was followed by a two-day workshop in Ranchi with the Registered Medical Practitioners (RMPs) practicing in the tribal areas. Fourteen RMPs and three NGOs participated in the workshop.





FUNDING THE PROJECTS

S-ILF invites proposals from people affected by leprosy and their families, living in self-settled leprosy colonies. The objective of the financial assistance is to create and enhance dignified income generating activities for people affected by leprosy and their families living with them.

RIISING TO DIGNITY AWARDS 2015

S-ILF's Rising to Dignity awards recognize the three best livelihood initiatives running over the last four years by beneficiaries of S-ILF's livelihood program.



THE AWARD WINNING TEAMS

Team 1

Nature of Enterprise: Coir Rope Enterprise

Colony: Shantidan

Location: Khurda, Odisha

No. of beneficiaries: 05 women

Names of beneficiaries: Jhuna Dei, Khadika Nayak, Minati Behera, Sita Dai, Subhasi Pradhan

Mentor: People's Forum

Assistance Provided: INR 2,50,000

This is an all-women's enterprise for making coir ropes. In 2010, S-ILF signed off financial support to these women to take over an already running small-scale plant making coir rope. Prior to taking over this plant, all the five women were dependent on minimal daily wages and casual labor for their living. Their plan was to upgrade the small plant, where rope was being made with simple, manual tools, to a bigger one, using an electric machine. The plan was well thought of and the beneficiaries were committed; but the journey to accomplish their dreams wasn't quite as easy as they had thought.

Getting started with the project itself was not easy as they faced a lot of discouragement particularly from the men folk who were convinced that, being women, they would not be able to run the project on their own. Then, after installing the machines, they realized that the electricity supply was not adequate and that they would need a transformer to be installed in their colony to run the machines on a regular and uninterrupted basis.

With the support of S-ILF, People's Forum and their Colony Leader, these women approached the authorities and succeeded in persuading them to install a transformer in the colony. This was a major step but their journey continued to be fraught with challenges.

For example, the new transformer had old cables, which led to severe electricity fluctuations, thus making it difficult to run the machines. The activity had to be stalled again as a result. Once again, the women took it upon themselves to persuade the authorities to replace the old cables with new ones. Work finally started in January, 2012, after a long gap of one and a half years. Not disheartened, the women resumed work in the plant with great enthusiasm.

Today the enterprise is well established and profitable, producing more than 50 kgs of rope daily. The pride that the women have in their work shows in their confidence and smiles as they go to work in their bright yellow saris – a uniform that they have chosen for themselves. Not only is the enterprise fully managed by the women themselves, they have even learnt how to do minor repairs of the machines themselves and no longer waste time waiting for the mechanic to show up. What is even more inspiring is that these women have started “mentoring” a similar project in a nearby colony. Having helped themselves they are now helping others! It is not surprising that the earlier skepticism of their men folk has been replaced by respect and admiration.

Team 2

Nature of Enterprise: Goat Rearing

Colony: Jahajpadia Colony

Location: Belpahar, Odisha

No. of beneficiaries: 13

Name of beneficiaries: Santosh Hota, Nakula Jhankar, Sukru Baiswal, Rabi Bhoi, Jagalal Tandi, Dhabal Kapat, Debadi Sahu, Gauranga Nag, Baisakhu Bharasagar, Kandarpa Nag, Rajesh Deep, Jagat Pradhan, Nepal Bhoi

Mentor: Manav Adhikar Seva Samiti (MASS)

Assistance provided: INR 2,34,650

At the time of initiation of the project, all 13 members of this group were dependent on begging for their survival. In March 2012, S-ILF provided funds for the purchase of goats. Each member got three goats and with the help of S-ILF and the mentor organization, they collectively developed a plan for management of this project. Within a period of two and a half years, this group has made a great success of this opportunity. They have been able to manage the project in such a way as to generate a steady monthly income from the sale of goats. In addition to this they have also nearly doubled their livestock and now have 60 goats. The success of this initiative is a remarkable testimony to their hard work and determination especially as none of the members had any previous experience in this field. Their only driving force was to break out of the cycle of begging and dependence on alms and donations.

A striking characteristic of this group is the clearly visible trust and understanding amongst each other. They have been assisted all through by a very supportive Colony Leader. As a result they have been able to improve their incomes and also create some household savings. This has enabled them to contribute regularly to a revolving fund which has been formed with the intention of helping others in the colony





to benefit from some start up funds. These contributions are now being used to support livelihood initiatives of other members of the colony.

Today all the beneficiaries have become active role models for their community, providing constant motivation and guidance to their fellow members. Drawing from their guidance, other leprosy-affected people in the colony have ventured into other forms of livelihood like running a mini bus service for school children, pig rearing and agriculture-based initiatives. Today, we see a spirit of budding entrepreneurial skills in the colony, with moral support and inspiration from these beneficiaries.

With economic success has come a greater sense of dignity, an improvement in the standard of living and increasing confidence to aspire for an even better life. Individual gains have been accompanied by an improvement in the colony infrastructure as well – the colony now has cemented pavements, boundary walls, clean drinking water, kitchen gardens, neat houses and ‘earning’ families. Unity among themselves has given them the confidence to approach the civic authorities for the provision of basic services.

The Colony Leader, the community and the mentor all believe that the trigger for this remarkable positive change has been this economic opportunity.

Team 3

Nature of Enterprise: Multiple Enterprise

Colony: Nireekshana

Location: Ramachandrapuram, East Godavari (District), Andhra Pradesh

No. of beneficiaries: 12

Name of beneficiaries: Chandra Rao Chollangi, Chantamma Tammela, Harika Parsuram, Krishna Gedela, Lakshmi Sunkari, Pampana Ramakrishna, Raghava Chelli, Rajesh Seela, Satyam Naidu Terli, Satyanarayana Dakoju, Viratu Avupati, Yarlagadda Mariyamma

Mentor: Rural India Self Development Trust (RISDT)

Assistance Provided: INR 2,24,000

This group comprises men and women who are middle aged or elderly with many of them suffering from physical disabilities. This has not, however, hampered their motivation. The group opted for a multiple enterprises-based project wherein they each took up a different economic activity in accordance to their choice and based on their previous experience and skills. The different activities in which the members of this group are engaged in include dairy farming, cycle rickshaw pulling, carpentry and petty trading.

Today this multiple business project is in its fifth year. It is running profitably and has become self-sustaining. Despite its complex business model involving various small businesses, the group works cohesively and efficiently as a team; it manages its accounts transparently with each member knowing the status of all other members; repayments to the community revolving fund are made on a regular basis from a share of monthly profits. These repayments are used to support other livelihood projects in the community.

The group has been able to achieve this as a result of their diligent and efficient working style, which has included holding regular meetings to keep a track of progress for each business and by sharing and learning from each other's experiences. The group is a fine example of teamwork, integrity and discipline. They have regularly followed instructions from their association and abided by community decisions. Their biggest success they say is moving into a dignified and self-respecting means of earning their livelihood. This project is now moving on to the next level, with new members joining the group. With everyone in the group sharing a sense of commitment and integrity, there continues to be a shared interest among members of the group for collaborative team work.



SKILLS TO EMPLOYMENT PROGRAM (STEP UP)

The children of leprosy-affected families unfortunately also face discrimination and exclusion even though they themselves do not have leprosy. Although the parents see education as a necessary means to both social and economic betterment, they are constrained by their poor economic situation and unable to send their children to good schools.

Not only are the levels of education in the government schools poor, the children often have to face discrimination sometimes even from teachers who do not know any better.

In addition, often they are the first generation school goers and thus do not get the parental support that would push them to do well in school. Dropout rates are high and students give up after 7th or 10th grade. Even among those who complete grade 12, there are many who are either not inclined to go in for higher studies and tend to look for petty jobs. The few who are interested in studies often do not have the economic means to pursue the courses of their dreams.

The only way to empower the youth and children of this socially suppressed group is to provide them practical skill training and education that makes them easily employable and financially independent.

S-ILF's Skills to Employment Program (STEP-UP) is aimed at addressing these children. Under this program, youth who do not want to pursue higher studies are given skills training so that they become employable and can get entry level jobs. S-ILF has successfully collaborated with the National Skill Development Corporation (NSDC) to conduct an organized skill development program. Details of the same are provided later in this section.



SKILL DEVELOPMENT OF YOUTH

This program focuses on creating sustainable livelihoods for drop-out and unemployed youth through skill development training. With a grant from the NSDC, S-ILF started a skills training program for school drop outs and those who did not want to study beyond Class XII. Initially, S-ILF provided skill development to youth for employability from leprosy-affected families in five states of India – Bihar, UP, MP, Odisha and Maharashtra. The program was extended to cover four additional States of West Bengal, Jharkhand, Chhattisgarh and Delhi in 2014 – 15.



The unique characteristic of this program is that not only are the trainings provided free of cost, with the help of the training partners, S-ILF guarantees employment to 80% of the youth who successfully complete their trainings. Although the start was slow and mobilization of youth for such trainings took time, over the last year, with several youth having been successfully trained and employed, there is an increased interest and enrolment in this program.

This project is not only an opportunity for skill development and employment of youth from a highly marginalized group but also a platform to earn a steady and stable income to a group that has traditionally relied on begging as the main source of earning.



NURSING SCHOLARSHIP PROGRAM

Responding to a persistent demand from girls living in the colonies for assistance in pursuing a nursing degree, S-ILF's first intervention in the field of education was the setting up a nursing scholarship program for girls from leprosy colonies.

This program commenced in 2011, with support from the State Bank of India (SBI). Initially, five girls from leprosy-affected families were sponsored to pursue their dreams in nursing.

Today, 35 girls from leprosy-affected families are availing of scholarships for Degrees/ Diplomas in nursing with support from two donors – State Bank of India (SBI) and Sir Dorabji Tata Trust (SDTT). SBI is currently sponsoring 10 girls while SDTT is sponsoring 25 girls. These merit-based scholarships cover all costs of a four year nursing program. Currently the girls availing of the scholarships come from colonies spread across the different states such as Delhi, U.P, Chhattisgarh, Maharashtra, Bihar, Uttarakhand, M.P, Tamil Nadu and Jharkhand.

Nursing Batch	No. of Beneficiaries	Sponsor	2011	2012	2013	2014	2015	2016	2017
First Batch	5	SBI							
Second Batch	10	SBI/SDTT							
Third Batch	10	SDTT							
Fourth Batch	10	SDTT							
Total No. of Beneficiaries			5 girls	15 girls	25 girls	35 girls	30 girls	20 girls	10 girls



Megha Janardhan Shinde
4th year, BSc – Nursing,
College of Nursing, Sangli,
Bharati Vidyapeeth Deemed
University, Maharashtra

OUR BUDDING NURSING SCHOLARS

FOLLOWING THEIR DREAMS...

“

I will be forever thankful to S-ILF for this scholarship. Completing my Nursing degree from a prestigious institution will be a dream come true for me! This will mean, I can lead a respectful life and make my family proud.

”





Dipika Kumari

4th year, BSc – Nursing,
Sahara College of Nursing
and Paramedical Sciences,
Lucknow, Uttar Pradesh

“

Had it not been for this scholarship I would not have been able to pursue this professional degree as the fee is a lot for my family to afford. Studying in a professional institute is giving me a lot of exposure and confidence. It is preparing me well to step in to the big world out there.

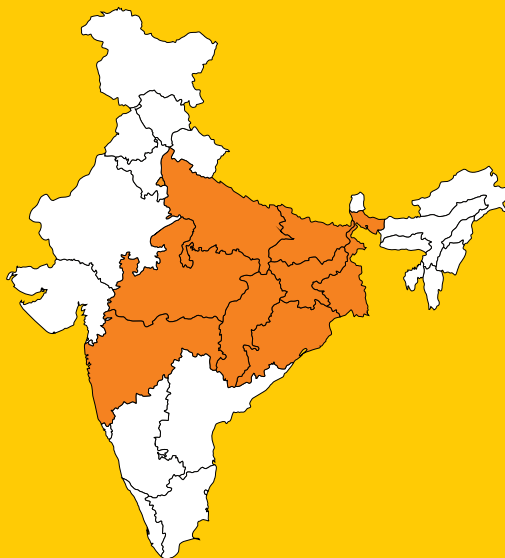
”

PARTNERSHIPS FOR SKILL DEVELOPMENT TRAINING

S-ILF has approached and tied up with several training partners for this program. In 2014, new partnerships were made with organizations like Simtej Seven Academy, IIJT, GMR Varalakshmi Foundation, LYCOS Computer Education Centre, GRAS Academy, Gramin Vikas Evam Samajik Sewa Sansthan. In addition, S-ILF has continued working with its previous training organizations like Don Bosco Tech, Pratham Education Foundation, Gram Tarang, B-able, Social Economic Educational Initiative Foundation etc.

TRAINING LOCATIONS

Skill development training has been conducted in 2014-15 in Ranchi (Jharkhand), Dhamtri (Chhattisgarh), Midnapore (West Bengal), Khurda (Odisha), Nasik, Chinchwad, Mumbai, Pune, Satara, Latur and Aurangabad (Maharashtra), Kanpur, Unnao, Jhansi, Lalitpur, Mauranipur and Lucknow (Uttar Pradesh), Bhopal (Madhya Pradesh) Siwan, Muzaffarpur (Bihar) and Delhi.



Training Organisations

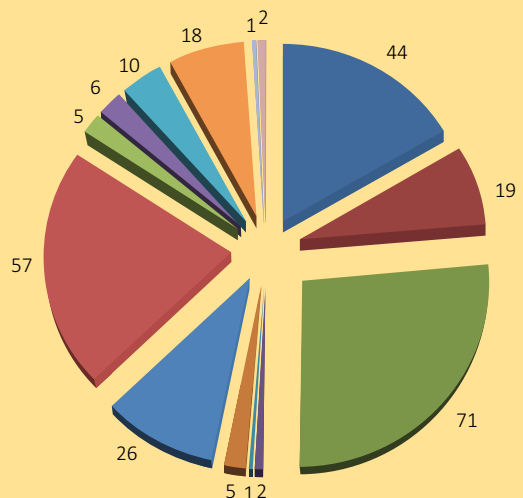
1. Gram Tarang
2. Pratham Education Foundation
3. GRAS Academy
4. LYCOS
5. GMR Foundation
6. IIJT
7. Don Bosco Technical Institute
8. Simtej Seven Academy
9. Social Economic Educational Initiative Foundation
10. Gramin Vikas Evam Samajik Sewa Sansthan



TRADES COVERED

Youth are trained by S-ILF in a range of trades. The vocational training courses covered under the program are hospitality, cargo management, electricals, computer hardware and networking, construction, bed side assistant, organized retail, auto motive, mechanic, refrigeration and air conditioning (RAC), hospitality, welding etc.





- Computer/Hardware and Networking
- Hospitality
- Automobile
- ITEs/BPO
- Bedside Assistant
- Machinist
- Cargo Management
- RAC
- Construction
- Retail Executive/Sale and distribution
- Electrical
- Sewing Machine Operator
- Accountancy/Financial Accounting and Controlling and Sales and Distribution
- Welding

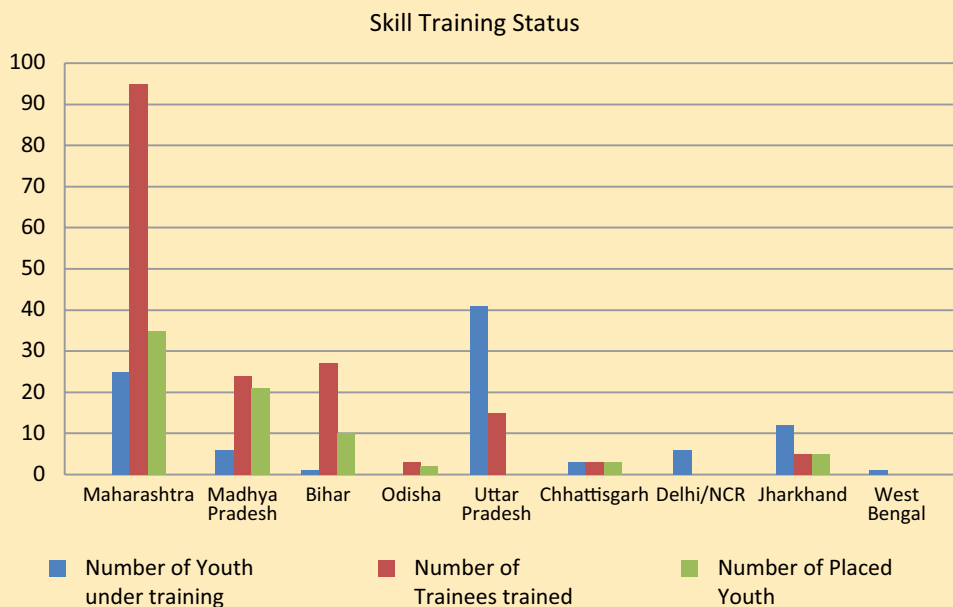
Trades covered for skill development

SKILL DEVELOPMENT—OUR GOAL VS. OUR ACHIEVEMENT

Number of Youth We Intend to Train in Partnership with NSDC	Our Achievement to Date				
	350	267 youth have been targeted	172 have been trained	96 youth under training	76 youth placed after training

Note: 96 girls have benefitted from this program

SKILL DEVELOPMENT—TRAINING AND PLACEMENT



State-wise break-up at a glance

PLACEMENT OF YOUTH

Out of 141 trainees who have successfully completed their training, 76 have been placed and the remaining 62 trainees will be placed shortly as the placements are under process. Some of the major employers of the trainees are Mahindra, Voltas, Larson and Toubro, 3-5 star hotels (Royal Orchid Hotels, Sayaji Palace, Fortune Landmark, Mirador Hotel, Della Adventure, Dolphin Hotels, Marugarh Resort, Shilpi Resort etc.), leading hospitals like Vijan Hospital, Supert etc. The trained youth are earning salaries in the range of INR 4,000 to 15,000 per month depending on the locations and trades. Youth from the hospitality and construction trade are earning most salaries in the range of INR 8,000-15,000. Youth from the bed side assistance trade are earning approximately INR 4,000 to 6,000 per month.

MONITORING AND DOCUMENTATION

S-ILF has been closely monitoring the trainings and placement of the youth. During the monitoring, some of the trainees and placed youth were interviewed and their statements were recorded which were later developed into a 10-minute documentary film highlighting the success and impact of the project. This film is available for viewing on request.



THE SKILLS DEVELOPMENT CHALLENGE



Mr. Tanzeel Ur Rahman
Program Officer,
STEP UP

“

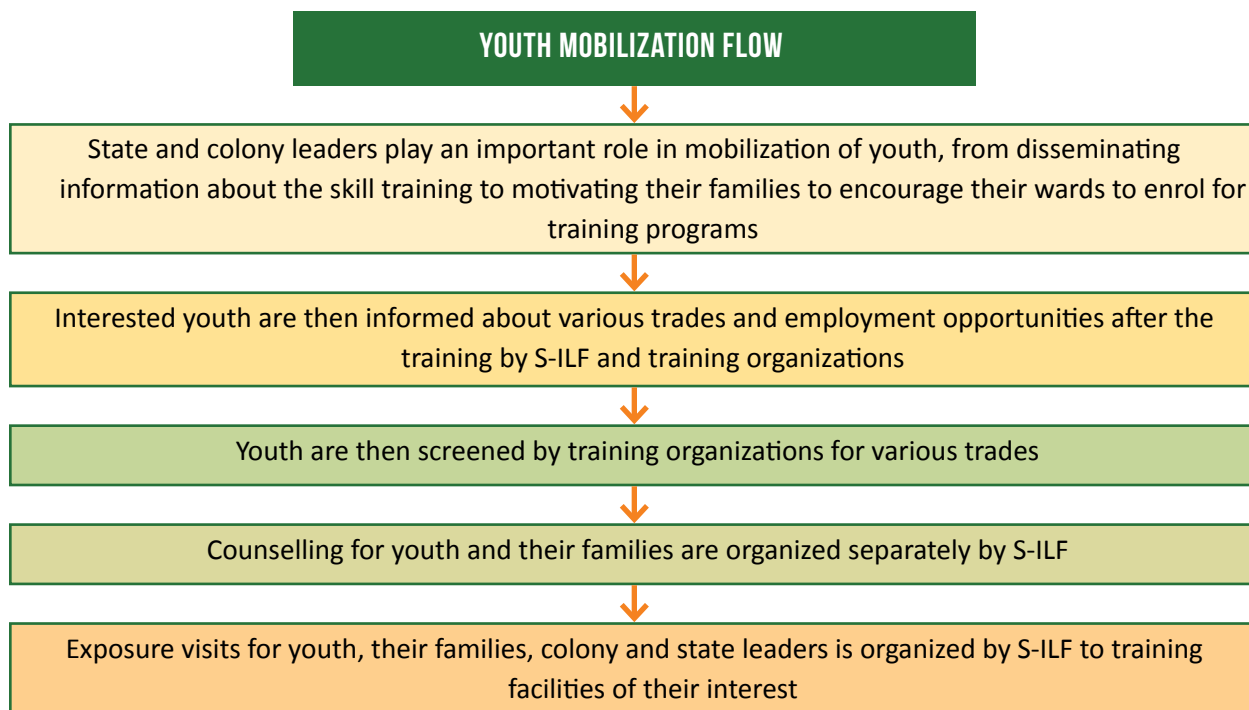
Unfortunately, despite the obvious benefits of acquiring vocational skills and their practical use in gaining employability, youth across the country are sceptical about the value of such courses. In the case of leprosy-affected families, this problem is further aggravated due to the associated stigma and a sense of inertia as a result of begging and donations as an acceptable way of living. Further, a mere BA degree is incorrectly perceived as a passport out of poverty, an illusion which quickly wears off. Past records of failure in families despite vocational training is a discouraging mind set that is often difficult to break. Owing to all these reasons, mobilization of youth into our skill development program remains one of our biggest challenges.

”

MOBILIZATION OF YOUTH

The biggest challenge for S-ILF as with other training partners in the field of skills trainings has been identifying, motivating and inducting youth into S-ILF's Skill Development Program, referred to as youth mobilization. Mobilization is a time consuming process as most of the leprosy colonies in states are scattered and vary in size from 5 households to 200 households.

S-ILF works closely with State and colony leaders, members of APAL to reach out to the parents and youth from the colonies.



S-ILF is now taking the help of students who have been trained and employed as role models for mobilization drives. This has had a positive impact on potential trainees and their parents. We have also worked with other leprosy NGOs. S-ILF in collaboration with Netherland Leprosy Relief (NLR) Foundation is mobilizing youth in the states of Bihar, Uttar Pradesh and Delhi. Another NGO working on leprosy, LEPROA Society approached S-ILF for extending support in mobilization of the youth from leprosy families from Delhi, Odisha, Bihar, and Madhya Pradesh leprosy colonies. Several mobilization drives have been organized with the support of partner organizations such as Pratham Education Foundation and Don Bosco tech in the state of Chhattisgarh, Jharkhand and West Bengal.

YOUTH TRAINED BY S-ILF

SUCCESS STORIES



SONU KUMAR
MAHABALESHWAR HOTEL,
PUNE

Sonu Kumar, a high school dropout and resident of Sitamarhi, Bihar has risen successfully from a life of struggle. *Sonu along with his batchmates*

Sonu discontinued his education in order to take care of his ailing parents, who are on Multi Drug Therapy (MDT) for the treatment of leprosy. Social stigma against leprosy-affected lead to displacement of his family from their paternal village. Finally they were accepted by a leprosy colony in the area. Despite the challenges in his life, Sonu always dreamt of making it big in life, but was helpless due to the sheer lack of opportunity. His qualification was not sufficient to get him employment, particularly in Bihar where jobs are scarce.

In the month of July 2013, Sonu attended a mobilization session which was conducted jointly by S-ILF and Pratham Education Foundation. Following a successful session, Sonu opted for training in the hospitality trade, which was being conducted at Pratham Education Foundation at Siwan, Bihar.

Sonu, along with the other trainees from similar backgrounds learnt the skill of management, communication, pleasing mannerisms, personality development and customer dealing along with the core competencies of hospitality i.e., production, food and beverage, front office and housekeeping. The training transformed Sonu. His outlook to the future became very positive.

Sonu believed that his life has changed and he was motivated to utilize the knowledge and training that he had received. He believed that after the training, a platform had been developed for him and now he wanted to make use of this to achieve his dream of a successful future.

After completion of the three-months training, Sonu appeared for an assessment exam, which he cleared successfully. Following a successful interview process, Sonu secured employment at Mahabaleshwar Hotel, a five star property at Pune, with a monthly remuneration of INR 6,000 per month, excluding his food, stay and other expenses.

Sonu believes he is fortunate that he received the training.



VANITA VILAS BHAPKAR

SUPERTECH HOSPITAL, PUNE

Vanita Vilas Bhapkar, a housewife from Valmiki Nagar leprosy colony, Pune always dreamt of being a working woman. However, after completion of high school, she got married at an early age and discontinued her education.

Following her marriage, Vanita's life involved daily domestic chores and looking after her in-laws. Her husband works in a printing press, however, his salary is inadequate to support a family of four people. Vanita could not help as she was not qualified enough.

Vanita learnt about some girls from the leprosy colony who were fortunate to bear the expenses of vocational training but unfortunately she was not one of them. Vanita also wanted to train so she could assist her husband financially. During this period, S-ILF tied up with Pratham and was looking to train youth free of cost. Vanita got the information from her colony leader and she visited the nearest Pratham Education Foundation training centre located at a distance of 3 kms from her home in Nasik where a new batch was about to start for the three-month training in bedside assistance.

Vanita Vilas Bhapkar secured enrolment for S-ILF's Bedside Assistance course, where she learned basic nursing skills. Taught by experienced health professionals, the curriculum combined theory and practical training.

After completion of theory, Vanita was placed in a hospital for practical training.

Following completion of the training, Vanita was successfully placed in Supertech Hospital one of the leading hospitals in Pune.

Vanita's experience during the vocational training is very valuable to her. Now, Vanita's family is happy and proud of her. She is saving a substantial amount per month for her future plans and assisting her husband financially.



MOHAMMAD MASTAN

FIRST FLIGHT COURIER SERVICES, UPPERGUDA MOH'ALLA, ANDHRA PRADESH

Mohammad Mastan, a resident of Upperguda Moh'alla, Ali Malkajiri Rahga Reddy, Andhra Pradesh is one of the youth who completed S-ILF's vocational training (S-ILF partnered with Youth 4 Jobs (Y4J), a youth training organization).

Mastan's family's income was limited as his father expired when Mastan was only four years old. After the demise of his father, his family struggled to survive. However, somehow his mother brought him up with limited financial resources.

Mohammad Mastan suffered a heart condition during his childhood. Despite all odds, he completed his high school with great difficulty. However, he could not continue his studies after high school. Due to lack of skills and qualifications his work did not pay well. So, he continued to change employment.

In 2012-2013, Mohammad Mastan was identified by Y4J, S-ILF's training partner during their first training mobilization campaign. Mohammad Mastan received counselling with this organization and trained as a Retail Executive.

After completion of the training, Mohammad Mastan secured a job at Domino's Pizza, where he worked as a crew member. In order to dedicate more time to his family, he quit Domino's Pizza and joined First Flight courier services. This new job gave him time flexibility.

Today, Mohammad Mastan is an example for other youth. Training has helped build and refine Mastan's customer management skills. His attitude and behaviour has changed remarkably. Over a period of time, he has gained experience and confidence in his work. At his current entry level role, Mastan receives a salary of approximately INR 6,000 per month, which has resulted in a better life for him and his mother.

NEW INITIATIVES

SASAKAWA-DALAI LAMA SCHOLARSHIP PROGRAM



Last year HH Dalai Lama joined hands with S-ILF and visited the Tahirpur Leprosy Complex to boost the morale of people affected by leprosy and their families and help overcome society's prejudice against them.

Continuing support to the leprosy-affected, in November 2014, the HH the Dalai Lama Trust and The Nippon Foundation (TNF) pledged funds for higher and professional education of children from leprosy-affected families in states of Delhi, Bihar, Uttar Pradesh and Odisha. The education

program will be called HH the Dalai Lama-Sasakawa Scholarship (HHDLs) Program and will focus on providing financial assistance to those students wanting to take up professional degree courses of 1-4 year duration. The program will begin from the 2015-16 academic year and will be implemented by S-ILF with help from the Association of People Affected by Leprosy (APAL), TNF and HH the Dalai Lama Trust. The Scholarship Program was announced at an event held in Lodhi Estate, New Delhi.



Left to Right: Mr. Dinesh Trivedi, MP and Convenor of the Forum of Parliamentarians to Free India of Leprosy; Mr. Narsappa, President, Association of People affected by Leprosy (APAL); Mr. Tempa Tsering, Representative of HH The Dalai Lama Trust; Mr. Yohei Sasakawa







COMMUNICATION AND ADVOCACY

Though easily treatable, leprosy still strikes fear in a country like India. Lack of knowledge about the disease has led to the perpetration of misinformation and misconceptions resulting in a deep rooted and widespread stigma against the disease and those affected. This is true not only among the uneducated but also among the educated. The negative perception of the disease is manifested in discrimination against and exclusion of not only the leprosy-affected but also their families and a denial of their basic human rights. Special and concerted efforts need to be made to eradicate social stigma. Societal mindset has to be changed through awareness generation and advocacy.

To tackle this problem S-ILF has developed a multi-faceted approach that reaches out to people in all walks of life such as educational institutions, media, politicians and parliamentarians, lawyers and social activists, government institutions and as well as corporate houses.

S-ILF engages in awareness building to sensitize different sections of society to the needs of the leprosy-affected people and their families so that they are treated without discrimination and to demonstrate through successes of those who have struggled against all odds, that change is not only desirable but feasible too. It also engages in advocacy to ensure a legal and institutional framework that in no way discriminates against the rights of the leprosy-affected as equal citizens of the country, to ensure that any violation of the rights of the leprosy-affected is treated as a human rights issue, to set in place mechanisms of redress of grievances and punitive action.



SOME OF OUR COMMUNICATIONS AND ADVOCACY WORK



FORUM OF PARLIAMENTARIANS TO FREE INDIA OF LEPROSY

The formation of a Forum of Parliamentarians to Free India of Leprosy was announced during the International Symposium on 3rd-4th October, 2012 organized by S-ILF. Since then S-ILF has been working closely with this forum. Headed by MP and ex-Railway Minister, Mr. Dinesh Trivedi and ex-MP, Mr. Madhu Gaud Yaskhi, the forum cuts across party lines and aims to free India of leprosy. The members offer their good offices and influence in the legislature to raise awareness about leprosy and bring about changes that would ensure the basic human rights of the leprosy-affected. They also facilitate link up of leprosy-affected people in their constituencies with the existing national and state government welfare schemes.

The Forum has the blessing of Hon'ble ex-Speaker of Lok Sabha, Mrs. Meira Kumar and the Hon'ble Vice President of India, Mr. Hamid Ansari. And has till date, 53 members from different states and different parties.

In 2014-15, under the leadership of Mr. Trivedi and Mr. Yaskhi, a core committee was formed to plan on more effective and outcome-based engagement of the MPs in this initiative. Each and every one of the members of the newly elected parliament was approached and informed of the activities of the Forum which met twice during the winter session of the parliament.

The MPs showed keen interest to visit the colonies and interact with the people there. In order to facilitate a more meaningful interface of colony members and MPs, S-ILF started an initiative for creating awareness among colony members of the different welfare schemes for which they could be eligible and to help them identify for themselves their needs and the specific scheme under which these could be met. Once they were ready with their petition, it was decided that S-ILF would facilitate the interaction of the MPs with the colony people.



With the help of MASS, a local NGO, a pilot workshop was organized in Odisha to create awareness among colony members of the different existing welfare schemes. The workshop focused on issues of local governance and the mechanisms available for their redressal, on government programs and social safety nets such as NREGA, NRHM, PDS, SC and ST welfare, rural development, housing, road, safety, water and sanitation programs etc., in order to educate and build capacities of the people affected to enable them to request and negotiate their entitlements and rights in government programs. A follow-up workshop was held towards the end of the year on 20th March 2015.

YOUNG PARTNERS PROGRAM (YPP)

In an effort to create awareness in society about the facts of leprosy, its medical cure and highlight the lack of basis for the stigma and discrimination that leprosy-affected people and their families are subjected to, S-ILF decided that one of the effective longer term solutions would be to catch the population young. Thus started the Young Partners Program (YPP) under which S-ILF conducts awareness and sensitization sessions in schools.

With financial assistance from National Human Rights Commission (NHRC), YPP approached 15 government schools. The program began with a sensitization of the school principals and teachers. This was followed by sessions in individual schools. Targeting Class VIII and IX students who counselors say are beginning to be socially aware and concerned, S-ILF conducted interactive sessions with the students and involved them in role play and poster making. In all, 8 schools involving around 1,000 students participated in the second phase of the awareness sessions and poster competition.

S-ILF also took its school program to private schools in Delhi and made a presentation to the students of Class XI and Class XII at Vasant Valley School, New Delhi on 29th August 2014 to raise awareness about leprosy amongst students. A student council has been formed in the school to carry forward the awareness program among other students of the schools and also in other private schools.

THEATRE GROUPS

S-ILF collaborated with Bhaav Arts of Expression, one of the leading theatre groups in Delhi to create a 10-minute play focusing on the stigma and discrimination attached with leprosy. A series of seven plays were performed in different public locations in east, west central, south and north Delhi from the end of August to mid September 2014.

ANTI-LEPROSY DAY CELEBRATIONS

Every year on Mahatma Gandhi's death anniversary, which in India is also known as Anti-Leprosy Day in deference to the wishes of the father of the nation to see the scourge of leprosy wiped off the face of India, S-ILF gives away its Rising to Dignity Awards. These awards are a token of recognition of the enormous efforts made by leprosy-affected people to move away from dependence on begging and become self-employed.

S-ILF's Rising to Dignity awards recognize the three best livelihood initiatives running over the last four years by beneficiaries of S-ILF's livelihood program.

The award consists of a Trophy, a Citation and a Cash Award of INR 1,00,000. The Colony and State Leaders as well as the mentors of the selected projects also receive a Special Citation for their contribution to the success of the projects.

This year, the award function was held in India International Centre, New Delhi. Union Railway Minister, Mr. Suresh Prabhu was the Chief Guest and other dignitaries were Mr. Madhu Goud Yashki, ex-Member of Parliament and Co-Convenor of the Forum of Parliamentarians to Free India of Leprosy; Dr. P.K. Gopal, President Integration, Dignity and Economic Advancement of people affected by leprosy (IDEA), India and Founder of Association of People Affected by Leprosy (APAL) and Mr. Javed Abidi, Director of the National Centre for Promotion of Employment for Disabled People



(NCPEDP). More than 250 guests including leprosy-affected people from colonies in Delhi, Odisha, Andhra Pradesh as well as academics, bureaucrats, health and social workers and media people attended the event.

The recipients of S-ILF's Rising to Dignity 2015 awards were from three leprosy colonies namely, (i) Shantidan colony, Khurda, Odisha; (ii) Jahajpadia colony, Belpahar, Odisha; and (iii) Nireekshana colony, Ramachandrapuram, East Godavari, Andhra Pradesh.

A highlight of the program was a vibrant and uplifting play 'Apna Khayal Rakhna' focusing on discrimination and stigma faced by leprosy-affected people by Kaarwaan-è-Ghalib, a Delhi-based theatre group.

Various articles and news reports about the event were published in *CSR and Competitiveness*, *CSR Vision*, *Indian Express*, *CSR-Journal*, *Health Duniya*, *The Hindu*, *Bureaucracy Today*, *Times of India*, *The Deccan Herald*, *The Sunday Guardian*, *Punjab Kesri* and *The Asian Age* with the support of the PR Agency. Also, *AIR Rainbow* aired an interaction with the Executive director on its morning slot. S-ILF's Anti Leprosy day was covered by journalists of electronic media, including *DD News*, *Fuji TV*, *ANI TV*, *India News*, *The voice of Millions* etc.



This year, S-ILF initiated the printing of a message from the Prime Minister on Anti-Leprosy Day in Times of India, the leading national daily and also helped the Ministry with the contents of the print ad.

Anti-Leprosy Day message by the PM initiated by S-ILF that appeared in The Times of India

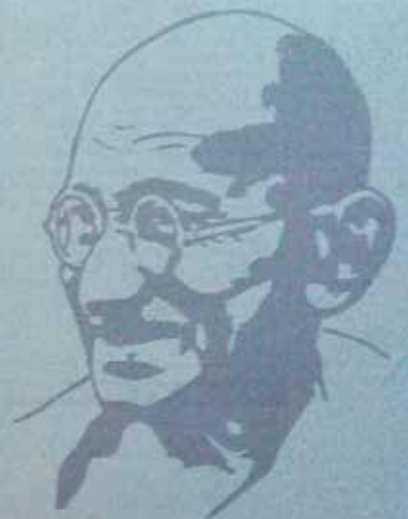


“ Today, as we remember and pay homage to Mahatma Gandhi, I appeal to my countrymen to follow his ideals for the upliftment of the underprivileged. Bapu worked selflessly for the care and rehabilitation of leprosy affected people and for their inclusion in mainstream society. Let us resolve today to realize his dreams, to remove the stigma against leprosy and to bring in all leprosy affected for early treatment and cure.

Remember, leprosy is completely curable. Let us together ensure a Leprosy Free India.

Jai Hind ”

Shri Narendra Modi
Hon'ble Prime Minister



ANTI LEPROSY DAY
30 January 2015

- Leprosy is completely curable.
- It can be easily diagnosed.
- It can be treated with Multi-Drug Therapy. The first dose stops the spread of the disease.
- Treatment is available free of cost at all government health facilities.
- Early treatment prevents disabilities.

Any of these could be leprosy...

- A skin patch anywhere on the body with impaired or loss of sensation.
- Reddish or skin coloured nodules or lump on the face or ear.
- Shining thickened skin.
- Tingling/ numbness and/or weakness in hands or legs.



Ministry of Health & Family Welfare
Government of India

S-ILF IN THE NEWS

IANS
03 March 2015

Scholarship for children from leprosy-affected families

CSR Vision
December 2014

His Holiness the 14th Dalai Lama with Yohel Sasakawa bestow US\$100,000 for education of children of leprosy-affected families

People Affected by Leprosy (APAL) will focus on providing financial support for education and completion of professional courses by these children.

HEALTH NEWS | **LEPROSY EDUCATION**

Making India leprosy-free

A sign of progress in eradicating leprosy, with the first case reported in India, the WHO has announced that the disease is now considered a leprosy-affected person to receive treatment. The WHO, the Sasakawa India Leprosy Foundation, and SCLC have joined the education to create the awareness and people taking the education to create the awareness as well as rural process. A survey report.

Social Media

Facebook

Daily FB status updation
Weekly drafting of statuses for approval
Pictures attached with a quote
The readership has fairly gone up

Mahima - I just saw a play by Sasakawa India leprosy foundation. I found it very informative and all these issues should address to general public for their own benefit. This is a really great job done by Sasakawa India Leprosy Foundation.

Testimonials of street play

PVR Priyas

Saumya - We just saw a play by Sasakawa India Leprosy Foundation. It is a very good play. It spreads awareness among the people. People think it is a communicable disease.

2014

Scholarship for children from leprosy-affected families

Saumya - We just saw a play by Sasakawa India Leprosy Foundation. It is a very good play. It spreads awareness among the people. People think it is a communicable disease.

2014

Scholarship for children from leprosy-affected families

Saumya - We just saw a play by Sasakawa India Leprosy Foundation. It is a very good play. It spreads awareness among the people. People think it is a communicable disease.

Eventshigh.com

Listing highly upcoming products

buzzintown.com

Anti-Leprosy Day

Sasakawa India Leprosy Foundation

Set up Ambassador Mr. Yohel Sasakawa cured society discrimination

Jagran Post
21 November 2014

Scholarship for children from leprosy-affected families

PRINT - Coverage

Dr. Sharda shares the foundation's goals

Deccan Herald
3 February 2015

TREATING LEPROSY

Awareness is the key to tackle it

Post

Scholarship for children from leprosy-affected families

Post

Scholarship for children from leprosy-affected families

Indian Express
January 17, 2015

Leprosy detection drive in 22 states

A special campaign has been launched in 22 states to detect leprosy cases. The drive is being conducted by the National Leprosy Eradication Programme (NLEP).

THERE ARE 31 leprosy colonies in India

A special campaign has been launched in 22 states to detect leprosy cases. The drive is being conducted by the National Leprosy Eradication Programme (NLEP).

FortiGuard

Scholarship for children from leprosy-affected families

FortiGuard

Scholarship for children from leprosy-affected families

OUR PARTNERSHIPS

SOCIAL MEDIA

S-ILF is active on the social media and its Facebook and Twitter pages are updated regularly. A closed Facebook advocacy group started by S-ILF named 'Living with DIGNITY-end stigma against leprosy-affected people' in 2014 reached a milestone of more than 1,000 active members.

MENTOR ORGANIZATIONS

To maximize its reach, S-ILF works with local NGOs for verifying and strengthening the viability of livelihood and vocational training project proposals and implementation and monitoring of the projects after fund disbursement.

S-ILF appoints mentors (either individual livelihood consultants or local NGOs) to facilitate the beneficiaries in developing, implementing and monitoring of the livelihood projects.



Some of our partner organizations are:

- Adarsh Path
- Bharat Sewa Sansthan
- Center for Advanced Research & Development (CARD)
- Dharamitra
- Gramin Vikas Vigyan Samiti
- International Leprosy Union
- Jago Foundation
- Jankalyan
- Mahatma Phule Samaj Seva Mandal
- Manav Adhikar Sewa Samiti
- Manav Kalyan Trust
- Network for Enterprise Enhancement and Development Support
- Network of Persons with Disability Organization
- Nirman Sewa Sansthan
- People Organization for Wasteland and Environment Regeneration
- People's Forum
- Programme for Rural Action and Youth Association for Social Service (Prayas)
- Priyanshi Educational, Cultural, Social Society
- Rural India Self Development Trust
- Shikshan and Samaj Kalyan Kendra
- Social and Healthy Action for Rural Empowerment
- Ujjiban03
- Vanvasi Sewa Kendra

FINANCIAL HIGHLIGHTS

FINANCIAL STATEMENTS FOR SASAKAWA-INDIA LEPROSY FOUNDATION

SOURCES OF FUNDS				
As on 31-03-2014			As on 31-03-2015	
₹ in Lakhs	%	Particulars	₹ in Lakhs	%
4634	86	Trust Fund (Corpus)	5251	85
746	14	Reserves & Other Funds	797	13
4	0	Sundry Liabilities & Provisions	104	2
5383	100		6152	100

APPLICATION OF FUNDS				
As on 31-03-2014			As on 31-03-2015	
₹ in Lakhs	%	Particulars	₹ in Lakhs	%
8	0	Fixed Assets	9	0
4317	80	Investments in scheduled Banks	5110	83
679	13	Investments - Others	679	11
380	7	Other Assets	355	6
5383	100		6152	100

INCOME				
For the Year Ended 31 st March'14			For the Year Ended 31 st March'15	
₹ in Lakhs	%	Particulars	₹ in Lakhs	%
82	18	Domestic Grant	19	5
376	82	Interest on Investments & Saving Bank Account	383	95
458	100		402	100

EXPENDITURE				
For the Year Ended 31 st March'14			For the Year Ended 31 st March'15	
₹ in Lakhs	%	Particulars	₹ in Lakhs	%
		Expenditure on Objects of the Trust (Including Grant Related expenses)		
105	32	Livelihood Program Support	141	49
38	12	Communication & Advocacy	40	14
28	8	Education	59	20
84	26	Administrative Expenses	90	31
73	22	Surplus/Deficit transferred to the Balance Sheet	-39	-13
328	100		291	100

YOUR ROLE

A SMALL BEGINNING...

Each and every one of us can and must become a brand ambassador and make a small beginning in fighting discrimination against the leprosy-affected and their families.

You too can make a difference by doing the following:

Reject the use of derogatory terms such as 'leper' and its equivalent in other languages as a person should never be defined by his or her disease.

Acknowledge that people affected by the disease and their families are equal members of society.

Remember that "Every person is born free and equal in dignity and human rights" (Universal Declaration of Human Rights, 1948) and apply it in every sphere of our lives.

Change our values and attitudes towards people affected by Leprosy.

Spread the Word that leprosy is fully curable, non-hereditary, non-contagious and that treatment is available free of cost.

If all of us including the government and the support groups join hands, together we can eradicate the social stigma and accomplish a leprosy-free society.







Sasakawa-India Leprosy Foundation

S-260, First Floor, Panchsheel Park,
New Delhi-110017

Phone number: +91 11 2601 3439

Fax number: +91 11 2601 3440

E-mail: workingmagic@silf.in

Website: www.silf.in